

StainZ Plus

Hematology slide stainer

**TRADITIONAL METHODOLOGY
WITH AUTOMATION**



Stain:

- Any two stain can be connected simultaneously (Leishman, Wright, May-Grunwald, Giemsa, Jenner, Wright-Giemsa, May-Grunwald-Giemsa)
- Ready to use stain ensure less staining time and good colorization
- Special Packing in pouch ensure long stability of staining
- No need of filtration of staining

StainZ plus slide holding Table:

It has up to 10 slide capacity flat bed and its unique design ensure

- No carry over
- Easy placing of slide on to slide holding table
- Through washing of excess stain

Stainz plus Dispense:

3x2 dispensing needles ensure

- Total slide area coverage for reagent
- Total slide area coverage for buffer
- Absolute control on reagents dispensation, optimize consumption of reagent
- Precise control on dispensing volume ensure repeatability of colorization

Washing method of slides:

- Angular washing method ensure good background cleaning.
- Wash water manifold ensure no dirt and complete cleaning of slide
- Optimize water consumption
- Every wash cycle executed with fresh water ensure no artifact

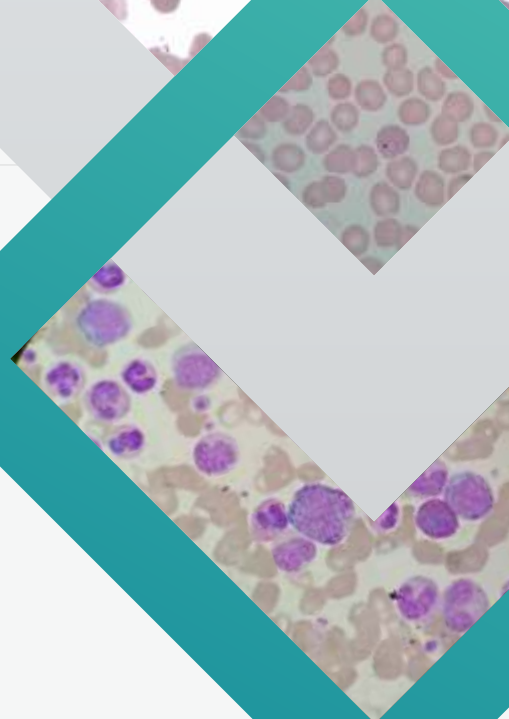
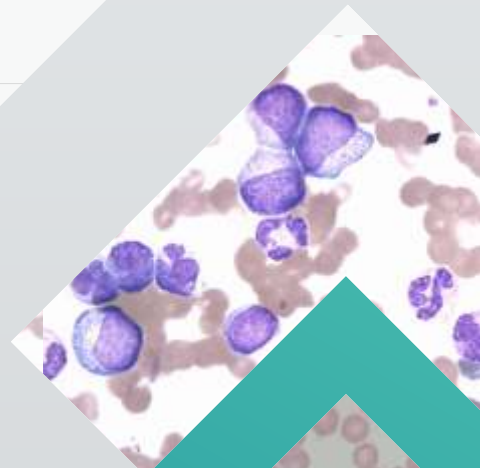


StainZ Plus

Hematology slide stainer

TECHNICAL SPECIFICATION

Method	Flatbed liquid dispensing methodology
Stain	Leishman, Wright, May-Grunwald, Giemsa, Jenner, Wright-Giemsa, May-Grunwald-Giemsa any two stain can be connected at a time
Throughput	Up to 200 slide per hour
Staining	Up to 10 slide per cycle
Specimen	Whole Blood, Bone Marrow, Body fluid, Malaria thick smear
Water supply	Tap water
Display	5.6" HMI LED
Cycle Timing	Depend on the Protocol
Size	504cm x 454cm x 335cm
Weight	25 kg
Input	AC 100-260V-50/60/Hz
External Power Supply	DC 24V, 110W



StainZ Scientific Pvt. Ltd.

H/7, Khan Real Industrial Estate, Near Seed Farm,
Pelhar, Vasai Phata, Vasai East, Palghar - 401 208, India.
Ph.: 022 8165661 www.stainz.co.in